



### TARGET AUDIENCE

All parents and professionals working on behalf of young children (preschool through early elementary school) with social, emotional and behavioral challenges.

### Speech-Language Pathologists and Audiologists

Continuing Education Credits (CEUs) are pending. Projected cost of \$20.

Application materials will be available at the sign-in desk.

### Occupational Therapists

Upon completion of this course .6 CEUs will be awarded at a cost of \$20.00.



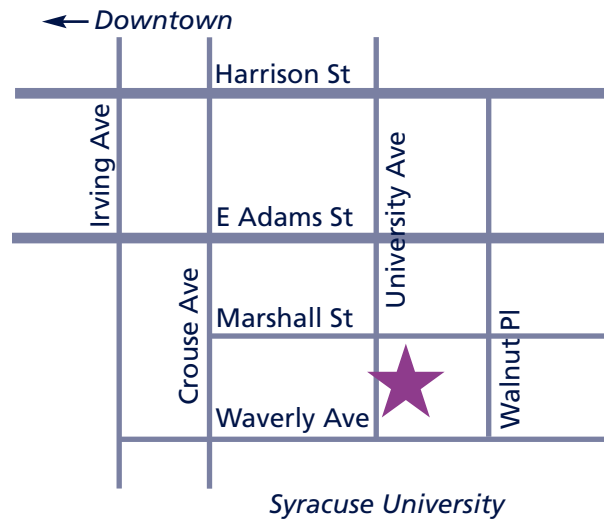
Application materials will be available at the sign-in desk.

### Physical Therapists

Upon completion of this course, physical therapists will be granted 6 contact hours through SUNY Upstate Medical University, a New York State Education Department Office of the Professions approved provider at no extra cost.

### Conference Booksale by Barnes and Noble

Conference attendees must bring their Barnes and Noble Membership and/or Educator's cards in order to utilize their discounts. Books by Dr. Greene will be available for sale.



### DIRECTIONS TO THE SYRACUSE UNIVERSITY SHERATON

#### From the North

Take I-81 south to Exit 18 (Adams/Harrison St.). Bear left on the exit ramp and go under the I-81 bridge. Turn left at the second traffic light onto East Adams St. At the fourth light turn right onto University Ave., go two blocks, hotel is on the left.

#### From the South

Take I-81 north to Exit 18 (Adams/Harrison St.). Turn right on East Adams St., go to the fourth light, turn right onto University Ave., go two blocks, hotel is on the left.

#### From the East

Take I-90 (NYS Thruway) west to exit 34A. Take Rt. 481 south to I-690 West to Teall Ave. Turn left onto Teall Ave. and go to the second light. Turn right onto Erie Blvd. East and go to University Ave. Turn left onto University Ave., go seven blocks, hotel is on the left.

#### From the West

Take I-90 (NYS Thruway) east to Exit 39. Take I-690 east to I-81 south. Take I-81 south to Exit 18 (Adams/Harrison St.). Bear left on the exit ramp, and go under the I-81 bridge. Go left at the second traffic light onto East Adams St. At the fourth light turn right onto University Ave., go two blocks, hotel is on the left.

Non Profit Org.  
U.S. Postage  
PAID  
Permit #110  
Syracuse, NY

**UPSTATE**  
MEDICAL UNIVERSITY  
MLW Developmental Evaluation Center  
Attn: Dr. Carroll Grant  
750 East Adams Street  
Syracuse, NY 13210

Sponsored by  
  
Margaret L. Williams  
**DEVELOPMENTAL EVALUATION CENTER**  
Kohl's Autism and Related Disorders Program  
[autismsyracuse.com](http://autismsyracuse.com)

NYS Office For People With Developmental Disabilities  
**Putting People First**  
**UPSTATE**  
Golisano Children's Hospital



in conjunction with the  
Central New York Coalition for  
Young Children with Special Needs

## CHILDREN WITH SOCIAL, EMOTIONAL AND BEHAVIORAL CHALLENGES

INCLUDING AUTISM SPECTRUM DISORDERS:  
**THE COLLABORATIVE PROBLEM SOLVING APPROACH**



PRESENTER:  
**Ross Greene, PhD**

**April 26, 2012**  
9:30 a.m. to 5 p.m.

Sheraton Syracuse University Hotel  
and Conference Center  
801 University Ave., Syracuse NY 13210  
315-475-3000

SPONSORED BY  
**Margaret L. Williams Developmental Evaluation Center**  
Kohl's Autism and Related Disorders Program  
in conjunction with  
CNY Coalition for Young Children with  
Special Needs

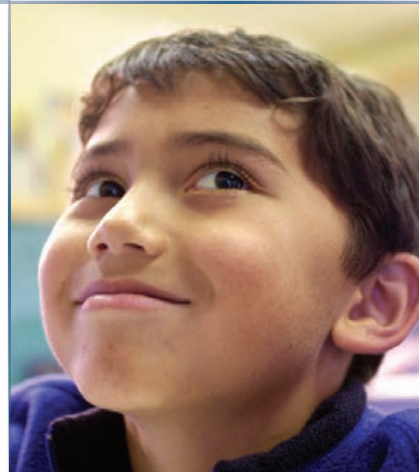
# CHILDREN WITH SOCIAL, EMOTIONAL AND BEHAVIORAL CHALLENGES

INCLUDING AUTISM SPECTRUM DISORDERS:

## THE COLLABORATIVE PROBLEM SOLVING APPROACH

Dr. Ross Greene is the originator of a model of psychosocial treatment called Collaborative Problem Solving (CPS), as first described in his book, *The Explosive Child*, and subsequently in his most recent release, *Lost at School*. Based on research in the neurosciences over the past 30 years, the CPS model posits that challenging behavior is the result of lagging cognitive skills, especially in the domains of flexibility/ adaptability, frustration tolerance, and problem-solving. CPS helps adults and kids solve the problems precipitating challenging behavior and simultaneously teach kids the skills they're lacking.

The model, which represents a dramatic departure from conventional wisdom and practice, has been found to be highly effective in an array of settings, including families, general and special education schools, therapeutic group homes, and inpatient, residential, and juvenile detention facilities. Participants in this workshop will leave with an understanding of the underpinnings of the CPS model, along with practical assessment and intervention tools that can be brought back to and used in these diverse settings.



### LEARNING OBJECTIVES:

At the conclusion of the seminar, participants will be able to:

- Describe how different explanations for and interpretations of challenging behavior in kids can lead to dramatically different approaches to intervention, and why conventional reward and punishment procedures may not be effective for many challenging kids
- Identify and assess the various cognitive skills that are central to adaptively handling life's social, emotional, and behavioral challenges
- Identify and prioritize unsolved problems precipitating challenging behavior
- The three basic mechanisms by which adults handle unsolved problems and unmet expectations in kids (Plans A, B, and C) and what is accomplished by each, and the three steps or "ingredients" of Plan B
- How to effectively implement Plan B to develop a helping relationship, solve problems, teach lagging cognitive skills, and reduce the frequency and intensity of challenging behavior

### BREAKDOWN OF TRAINING DAY:

8:45-9:30	Registration, Light Breakfast
9:30-11:00	Key Themes Lagging Skills and Unsolved Problems Setting the Stage for Challenging Behavior
11:00-11:15	Break
11:015-12:45	Assessment of Lagging Skills and Unsolved Problems Limits of Conventional Procedures
12:45-1-1:45	Networking/Bufferet Lunch
1:45-3:15	Collaborative Problem Solving: Overview of The Plans Overview of Plan B
3:15-3:30	Break
3:30-5:00	Specifics of Plan B Special Topics

### PRESENTER



**Ross W. Greene, PhD**, is Associate Clinical Professor in the Department of Psychiatry at Harvard Medical School and on the professional staff at the Cambridge Health Alliance. He is also adjunct Associate Professor in the Department of Psychology at Virginia Tech, Senior Lecturer in the school psychology program in the Department of Education at Tufts University, and founder of the non-profit *Lives in the Balance*, which aims to disseminate the CPS model through no-cost web-based programming and provide support to and advocacy on behalf of caregivers of behaviorally challenging kids. His research has been funded by the Stanley Research Institute, the National Institutes of Mental Health, the U.S. Department of Education, and the Maine Juvenile Justice Advisory Group. He consults extensively to families, general and special education schools, inpatient psychiatry units, and residential and juvenile detention facilities, and lectures widely throughout the world.



### REGISTRATION FORM

## CHILDREN WITH SOCIAL, EMOTIONAL AND BEHAVIORAL CHALLENGES

INCLUDING AUTISM SPECTRUM DISORDERS:

## THE COLLABORATIVE PROBLEM SOLVING APPROACH

**April 26, 2012 9:30 a.m. to 5 p.m.**

**Registration deadline: April 19, 2012**

#### Individual Registration Fees:

Postmarked or registered on line by April 6:

Professionals: \$85 Parents/Family \$55

Postmarked or registered on line April 7- April 19:

Professionals: \$95 Parents/Family \$65

Registration includes lunch, refreshments and parking at the Sheraton Conference Center.

Name \_\_\_\_\_

Address \_\_\_\_\_

City \_\_\_\_\_ State \_\_\_\_\_ Zip \_\_\_\_\_

Phone W: \_\_\_\_\_ H: \_\_\_\_\_

E-mail Address \_\_\_\_\_

Profession (circle all that are appropriate)

Speech  OT  PT  Social Worker

Teacher  Nurse  Psychologist  Other \_\_\_\_\_

Special accommodations needed:

**Mailed Registration** must include checks or purchase orders made out to "CNY Coalition." No confirmations will be sent for mailed registrations.

#### Send payment and registration form to :

MLW Developmental Evaluation Center  
215 Bassett Street  
Syracuse, NY 13210

**Online Registration** can be completed with a credit card at AutismSyracuse.com. An email confirmation will be sent for on line registrants.

One week notice required for full refund. If the conference is cancelled, a full refund will be provided.

**For more information, call: 315-472-4404.**